

BMW 1 Series  
3-door  
5-door



Sheer  
Driving Pleasure

[www.bmw.com](http://www.bmw.com)



# THE BMW 1 SERIES. 3-DOOR AND 5-DOOR MODELS.

**BMW EFFICIENT DYNAMICS.**  
LESS EMISSIONS. MORE DRIVING PLEASURE.

THE NEXT  
100 YEARS

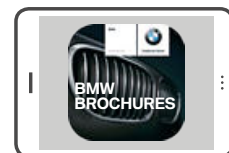




In 2016 the BMW brand will be celebrating its 100th anniversary. Find out more at [www.next100.bmw](http://www.next100.bmw)



## WANT TO DISCOVER MORE?



Discover the BMW 1 Series, digital and interactively, for example with the film and image gallery. Just download the BMW catalogue app for your mobile device and select the model you want.

Internet use, depending on your mobile contract, may incur costs.



## THE BMW 1 SERIES. ONE WITH THE WORLD.

### THE MODELS SHOWN.

#### 04 **BMW 1 SERIES 3-DOOR 120d WITH URBAN LINE:**

BMW TwinPower Turbo 4-cylinder diesel engine, 140 kW (190 hp), 17" light alloy wheels Double-spoke style 655 Ferric Grey, paint finish in Mineral Grey metallic, seats in leather 'Dakota' Oyster, interior trim finishers in acrylic glass black with matt Oxide Silver accent line.

#### **BMW 1 SERIES 5-DOOR 125i WITH M SPORT PACKAGE:**

BMW TwinPower Turbo 4-cylinder petrol engine, 160 kW (218 hp), 18" M light alloy wheels Double-spoke style 461 M in Ferric Grey with mixed tyres, Alpine White exterior paint finish, seats in cloth 'Hexagon'/Alcantara upholstery, interior trim finishers in Aluminium Hexagon with highlight trim finishers in high-gloss Black.

For further information about fuel consumption and CO<sub>2</sub> emissions see pages 56|57 or consult your BMW partner.

powered by

### INNOVATION AND TECHNOLOGY.

#### 24 **BMW TWIN POWER TURBO ENGINES:**

At the heart of BMW EfficientDynamics.

#### 26 **BMW EFFICIENT DYNAMICS:**

Maximum driving pleasure, minimum fuel consumption.

#### 28 **BMW CONNECTED DRIVE:**

Services & apps and driver assistance systems.

#### 30 **CHASSIS:**

Innovative systems for more driving pleasure.

#### 32 **SAFETY:**

State-of-the-art technology.



### INDIVIDUALITY AND CHOICE.

**36 EQUIPMENT:** BMW lines, M Performance Automobiles, equipment highlights, wheels and tyres and Original BMW Accessories.

**52 COLOURS:** Exterior and interior colour schemes.

**56 TECHNICAL DATA:** vehicle weight, engine, transmission, driving performance, fuel consumption, wheels and technical drawings.

**58 BMW SERVICE:** BMW Service, BMW Financial Services and BMW Experience.

「  
FOCUS  
ON THE  
」

# FUN FACTOR.

**Escape the everyday – with the BMW 1 Series,** thanks to its athletic design, exciting dynamism and amazing efficiency. And with BMW ConnectedDrive you can share all the best moments with friends and family whenever and wherever you feel like. The BMW 1 Series – a real good time.



# LET THE GOOD TIMES ROLL.

**Character plus spontaneity equals pure adrenalin.**

Boosted by BMW TwinPower Turbo technology and a wholly spontaneous responsiveness, the BMW 1 Series can't help but dish out your daily dose of happy. Treat yourself to fun driving day in, day out.







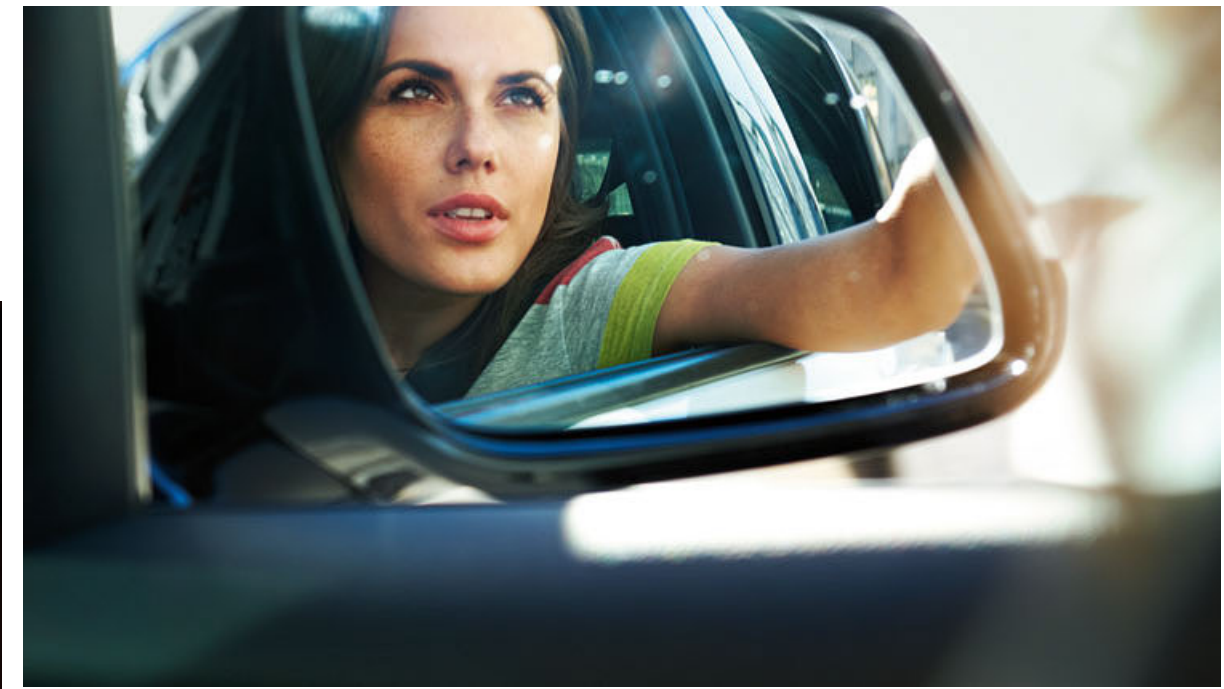
「 「  
**YES, IT DID JUST  
WINK AT YOU.**  
」 」

**Not just once – but every time you see it.**

The BMW signature kidney grille flanked by flat, dynamic full LED headlights (optional) shows just what sporty design can be, while the distinctive two-part L-shape LED rear lights are sure to attract a keen following. Believe your eyes – believe in the BMW 1 Series.







「 「  
**TRIGGERS  
GENUINE EUPHORIA.**  
」 」

**Never a boring moment – always a live wire.**

The fusion of thrilling dynamics and fresh, confident design is what makes every encounter with the BMW 1 Series so sensational. Step inside and you'll instantly understand just how motion can be transformed into euphoria.



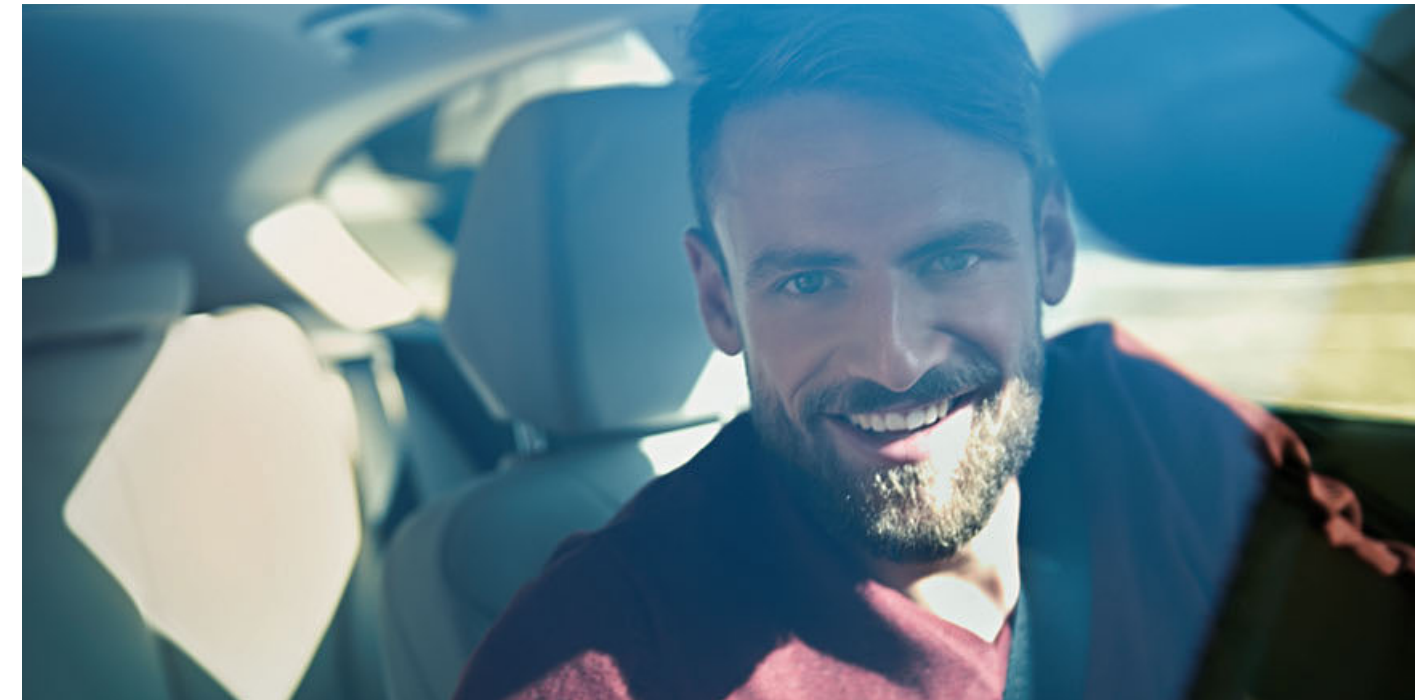


「 「  
**THE PLEASURE OF DESIGN –  
BOTH INSIDE AND OUT.**  
」 」

**The BMW 1 Series – a delight to see, touch and hear.**

Its modernistic design and distinctive interior surfaces have to be seen to be believed. Its individual sound is as unique as it is versatile: with unlimited access to millions of tracks in the optional BMW ConnectedDrive Online Entertainment service you can be sure of the perfect soundtrack for you and your BMW 1 Series, whenever you want, wherever you are.





「 「  
**MORE THRILLS  
PER GALLON.**  
」 」

**With the BMW 1 Series you'll save where it counts the most – at the pump.**

Innovative BMW EfficientDynamics technologies and the optional intelligent all-wheel drive system BMW xDrive coax a maximum of enjoyment from every drive, so you really can give your all.



「 「  
TAKE OFF FOR  
ENDLESS ADVENTURE.  
」 」



## INNOVATION AND TECHNOLOGY.

**BMW TWIN POWER TURBO ENGINES:** At the heart of BMW EfficientDynamics.

**BMW EFFICIENT DYNAMICS:** Making fuel saving fun.

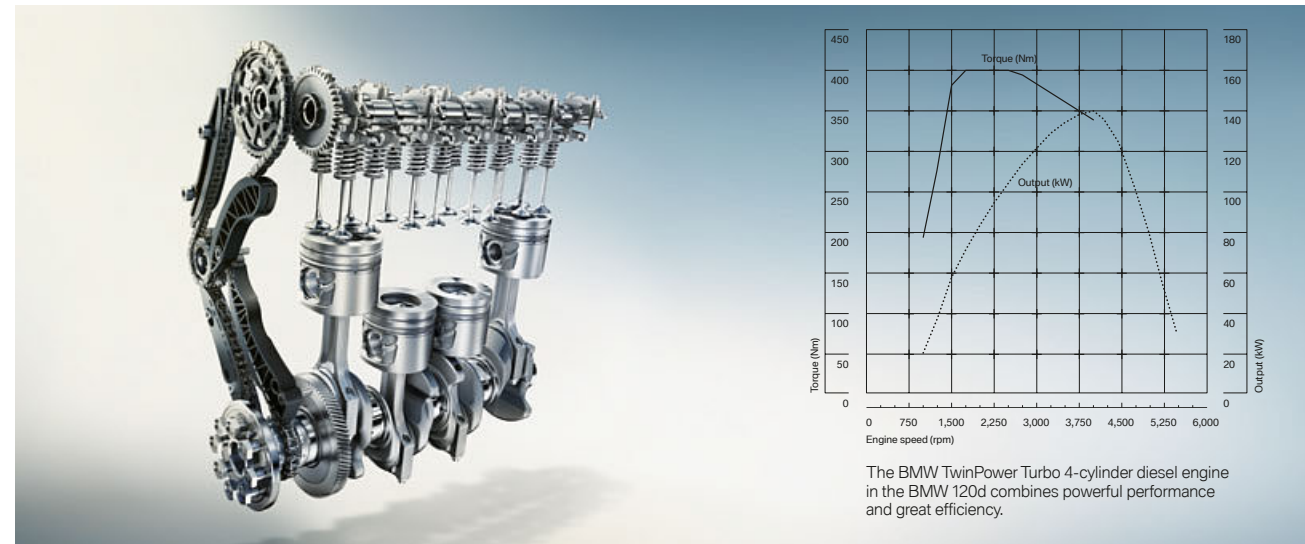
**BMW CONNECTED DRIVE:** Services & apps and driver assistance systems.

**CHASSIS:** Innovative systems for more driving pleasure.

**SAFETY:** State-of-the-art technology.

## BMW TwinPower Turbo engines. At the heart of BMW EfficientDynamics.

Thanks to BMW TwinPower Turbo technology, the innovative new generation of BMW petrol and diesel engines from the BMW EfficientDynamics engine range guarantee even more thrilling power delivery and excellent responsiveness even at low engine speeds, while also keeping fuel consumption and emissions to a minimum. Increased efficiency and optimal dynamics make driving a BMW more enjoyable than ever.



### BMW 116i.

- BMW TwinPower Turbo 3-cylinder petrol engine with 80 kW (109 hp) and 180 Nm of torque.
- acceleration 0–100 km/h: 10.9 s; top speed: 195 km/h
- combined fuel consumption: 5.0–5.4 l/100 km<sup>1</sup>
- combined CO<sub>2</sub> emissions: 116–126 g/km<sup>1</sup>

### BMW 118i.

- BMW TwinPower Turbo 3-cylinder petrol engine with 100 kW (136 hp) and 220 Nm of torque
- acceleration 0–100 km/h: 8.5 [8.7] s; top speed: 210 [210] km/h
- combined fuel consumption: 5.0–5.4 [4.8–5.2] l/100 km<sup>1</sup>
- combined CO<sub>2</sub> emissions: 116–126 [112–122] g/km<sup>1</sup>

### BMW 120i.

- BMW TwinPower Turbo 4-cylinder petrol engine with 130 kW (177 hp) and 250 Nm of torque
- acceleration 0–100 km/h: 7.4 [7.2] s; top speed: 225 [222] km/h
- combined fuel consumption: 5.7–6.0 [5.6–5.9] l/100 km<sup>1</sup>
- combined CO<sub>2</sub> emissions: 132–139 [129–137] g/km<sup>1</sup>

### BMW 125i.

- BMW TwinPower Turbo 4-cylinder petrol engine with 160 kW (218 hp) and 310 Nm of torque
- acceleration 0–100 km/h: 6.4 [6.2] s; top speed: 245 [243] km/h
- combined fuel consumption: 6.6–6.7 [6.3–6.5] l/100 km<sup>1</sup>
- combined CO<sub>2</sub> emissions: 154–157 [148–151] g/km<sup>1</sup>

### BMW 114d.\*

- BMW TwinPower Turbo 4-cylinder diesel engine with 70 kW (95 hp) and 235 Nm of torque
- acceleration 0–100 km/h: 12.2 s; top speed: 185 km/h
- combined fuel consumption: 3.6–4.0 l/100 km<sup>1</sup>
- combined CO<sub>2</sub> emissions: 97–106 g/km<sup>1</sup>

### BMW 116d EfficientDynamics Edition.

- BMW TwinPower Turbo 3-cylinder diesel engine with 85 kW (116 hp) and 270 Nm of torque
- acceleration 0–100 km/h: 10.4 s; top speed: 195 km/h
- combined fuel consumption: 3.4–3.8 l/100 km<sup>1</sup>
- combined CO<sub>2</sub> emissions: 89–101 g/km<sup>1</sup>

### BMW 120d/120d xDrive.

- BMW TwinPower Turbo 4-cylinder diesel engine with 140 kW (190 hp) and 400 Nm of torque
- acceleration 0–100 km/h: 7.1 [7.0] s (xDrive: [6.8] s); top speed: 228 [228] km/h (xDrive: [222] km/h)
- combined fuel consumption: 4.1–4.5 [3.9–4.3] l/100 km<sup>1</sup> (xDrive: [4.3–4.7] l/100 km<sup>1</sup>)
- combined CO<sub>2</sub> emissions: 108–118 [103–114] g/km<sup>1</sup> (xDrive: [113–124] g/km<sup>1</sup>)

### BMW 116d.

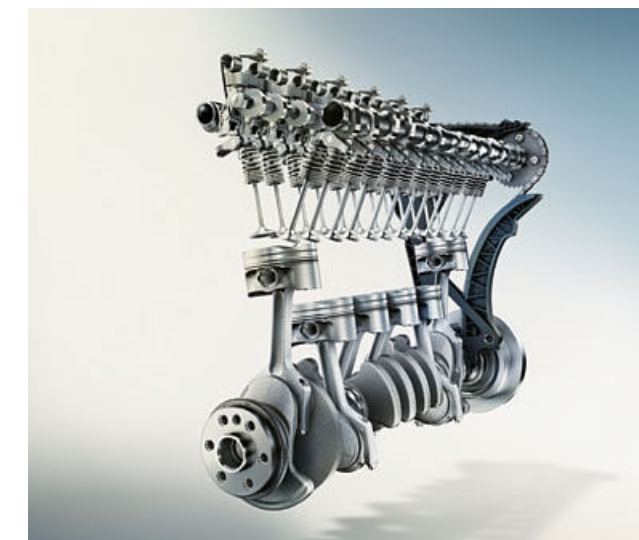
- BMW TwinPower Turbo 3-cylinder diesel engine with 85 kW (116 hp) and 270 Nm of torque
- acceleration 0–100 km/h: 10.3 [10.3] s; top speed: 200 [200] km/h
- combined fuel consumption: 3.7–4.1 [3.6–4.1] l/100 km<sup>1</sup>
- combined CO<sub>2</sub> emissions: 97–107 [96–107] g/km<sup>1</sup>

### BMW 118d/118d xDrive.

- BMW TwinPower Turbo 4-cylinder diesel engine with 110 kW (150 hp) and 320 Nm of torque
- acceleration 0–100 km/h: 8.3 [8.1] s (xDrive: 8.4 s); top speed: 212 km/h (xDrive: 210 km/h)
- combined fuel consumption: 4.0–4.3 [3.8–4.2] l/100 km<sup>1</sup> (xDrive: 4.3–4.7 l/100 km<sup>1</sup>)
- combined CO<sub>2</sub> emissions: 104–114 [99–110] g/km<sup>1</sup> (xDrive: 113–123 g/km<sup>1</sup>)

### BMW 125d.

- BMW TwinPower Turbo 4-cylinder diesel engine with 165 kW (224 hp) and 450 Nm of torque
- acceleration 0–100 km/h: [6.3] s; top speed: [240] km/h
- combined fuel consumption: [4.3–4.6] l/100 km<sup>1</sup>
- combined CO<sub>2</sub> emissions: [114–121] g/km<sup>1</sup>



### BMW M135i/BMW M135i xDrive.

- M Performance TwinPower Turbo 6-cylinder petrol engine with 240 kW (326 hp) and 450 Nm of torque
- acceleration 0–100 km/h: 5.1 [4.9] s (xDrive: [4.7] s); top speed: 250<sup>2</sup> [250<sup>2</sup>] km/h (xDrive: [250<sup>2</sup>] km/h)
- combined fuel consumption: 8.0 [7.5] l/100 km<sup>1</sup> (xDrive: [7.8] l/100 km<sup>1</sup>)
- combined CO<sub>2</sub> emissions: 188 [175] g/km<sup>1</sup> (xDrive: [182] g/km<sup>1</sup>)

powered by 

**BMW EFFICIENT DYNAMICS.**  
LESS EMISSIONS. MORE DRIVING PLEASURE.

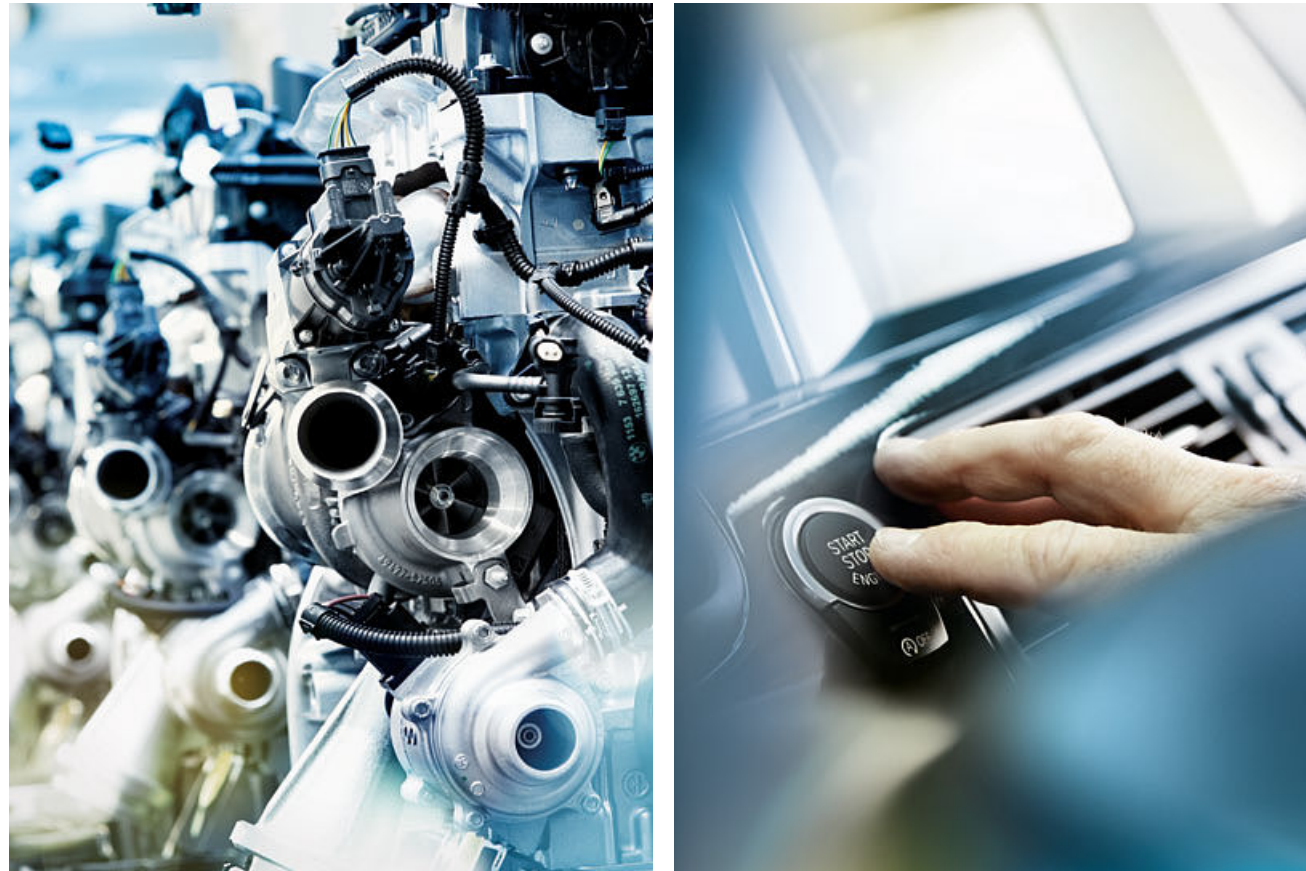
\* Provisional figures (figures awaiting official confirming based on the ECE driving cycle).  
<sup>1</sup> Fuel consumption and CO<sub>2</sub> emissions are affected by the selected wheel and tyre sizes. For more information, please see pages 56/57 or consult your BMW partner.  
<sup>2</sup> Electronically limited.

The figures for output, fuel consumption and CO<sub>2</sub> emissions refer to vehicles with standard transmission. Values in [ ] refer to vehicles with Steptronic transmission.

## BMW EfficientDynamics

### Less emissions. More driving pleasure.

Whether the goal is maximum performance or minimum fuel consumption – for us, the focus is always on delivering quintessential BMW driving pleasure. BMW EfficientDynamics is the strategy developed by BMW to minimise fuel consumption and CO<sub>2</sub> emissions while simultaneously increasing dynamics and driving pleasure. It's a comprehensive technology package that encompasses the drivetrain, energy management and the vehicle concept – and is standard in every BMW.



#### DYNAMIC AND EFFICIENT: THE 8-SPEED STEPTRONIC TRANSMISSION.

The optional **8-speed Steptronic transmission**<sup>1</sup> ensures smoother gear shifts and greater driving comfort, thanks to fast engine speed transitions and shorter shift times. It unites the ultimate in comfort with impressive dynamics and increased fuel-efficiency.

#### THE BMW 116d EFFICIENT DYNAMICS EDITION.

The BMW 116d EfficientDynamics Edition with the BMW TwinPower Turbo 1.5 litre 3-cylinder diesel engine is in a class of its own when it comes to fuel economy and efficiency. The engine delivers 85 kW (116 hp) at 4,000 rpm and delivers a maximum torque of 270 Nm between 1,750 and 2,250 rpm. This enables the BMW 116d EfficientDynamics Edition to accelerate from 0 to 100 km/h in just 10.4 seconds. Its combined fuel consumption of 3.4–3.8 litres per 100 km and low CO<sub>2</sub> emissions of only 89 to 101 g/km are a powerful testimony to the outstanding efficiency of its engine. Even at low engine speeds, the BMW TwinPower Turbo 1.5 litre 3-cylinder diesel engine is highly responsive to the driver's acceleration demands and is characterised by incredibly smooth performance.



#### DRIVE.

The **BMW TwinPower Turbo petrol engines** feature remarkably agile power delivery and excellent responsiveness, even at low engine speeds. At the same time they are more efficient, with less emissions and a better performance than their predecessors.

The latest generation of **BMW TwinPower Turbo diesel engines** are characterised by outstanding responsiveness and agile power delivery at all engine speeds. They are also breathtakingly dynamic and fuel-efficient with low emissions.

#### OVERALL CONCEPT.

For BMW, intelligent lightweight construction means using the right material for the right parts of the vehicle. The most suitable material is selected for every single component. This philosophy, also known as **BMW EfficientLightweight**, is now integral to BMW EfficientDynamics and is applied to every BMW as standard.

#### ENERGY MANAGEMENT.

The standard **ECO PRO mode** helps drivers reduce their fuel consumption by up to 20 percent<sup>2</sup>, depending on their driving style. Another five percent can be saved by using the coasting function<sup>3</sup> (only with the 8-speed Steptronic), Route-ahead assistant (only with Navigation Professional) or ECO PRO route (only with Navigation Professional or Business).

**Electric power steering** delivers a precise steering response at all speeds. Since the system's electric motor only consumes energy when steering support is actually necessary, in contrast to conventional systems that rely on a hydraulic pump, it also reduces fuel consumption.

With **Brake Energy Regeneration**, the alternator generates electricity primarily when the driver brakes or takes their foot off the accelerator. Previously unused kinetic energy is thereby transformed into electrical energy and fed into the battery.

<sup>1</sup> Standard with 120d xDrive and 125d. M135i xDrive standard with 8-speed Steptronic Sport transmission.

<sup>2</sup> According to an internal BMW fuel consumption study, depending on individual driving style.

<sup>3</sup> Not available for 120i.

# BMW ConnectedDrive

So connected, you're free.

Our world is becoming more closely connected every day. And for BMW drivers it goes without saying that they can request information, communicate via telephone or email and always be up to date – all while they're on the go. The BMW ConnectedDrive<sup>1</sup> concept encompasses all the services and innovative technologies that link BMW vehicles and their passengers to the outside world and surrounding traffic.



The **BMW ConnectedDrive Services**<sup>1,1</sup> option provides the driver with a wide range of information, entertainment and service features on the road.

It also includes BMW Online, which enables you to access current, localised information such as weather, news and an online search powered by Google™, as well as various office functions. You can also combine individual services and features such as webcams, fuel price info, parking information, travel and hotel guides in the “Applications” menu.

The secure and comfortable use of selected smartphone applications is also included for an unlimited period of time. The ConnectedDrive Services option also includes access to the **BMW ConnectedDrive Store**, in which services and apps can be booked, extended and selected according to individual needs, at any time and from any place. The ConnectedDrive Services option also offers much more to make each journey in a BMW into a real experience.

BMW ConnectedDrive encompasses a wide range of intelligent services and assistance systems, allowing everybody to choose just what they need. The **BMW ConnectedDrive Services & Apps** provide greater flexibility by networking the driver, car and the outside world. The **BMW ConnectedDrive driver assistance systems** make every drive in a BMW both safer and more convenient. Intelligent systems make the driver's job easier and minimise the risk of accidents.



With the optional **Online Entertainment**<sup>2</sup> package, a flat-rate account can be opened with any BMW music partner, for example with Napster, which can also be used with any other device supported by the provider. That means unlimited access to millions of songs.



**Driving Assistant**<sup>3</sup> combines the Lane Departure Warning and Approach control warning systems. When travelling at speeds between 10 and 60 km/h, the Approach control and person warning with light city braking function issues a warning if there is a risk of collision with vehicles or pedestrians, and brakes the vehicle in the event of an emergency. At speeds above approx. 70 km/h, the Lane Departure Warning draws the driver's attention to an unintentional lane change by means of slight vibrations of the steering wheel.



The **navigation system Professional**<sup>4</sup>, including splitscreen function, 8.8" LCD colour display and radio Professional with DVD player, features three-dimensional map presentation and 20 GB of memory. The system can be operated intuitively via the iDrive Touch Controller.

\* May not be available in all countries. Please consult your BMW partner.

<sup>1</sup> For further information on BMW ConnectedDrive, please visit [www.bmw-ConnectedDrive.com](http://www.bmw-ConnectedDrive.com)

<sup>2</sup> This feature is only available in conjunction with ConnectedDrive Services and the navigation system Professional.

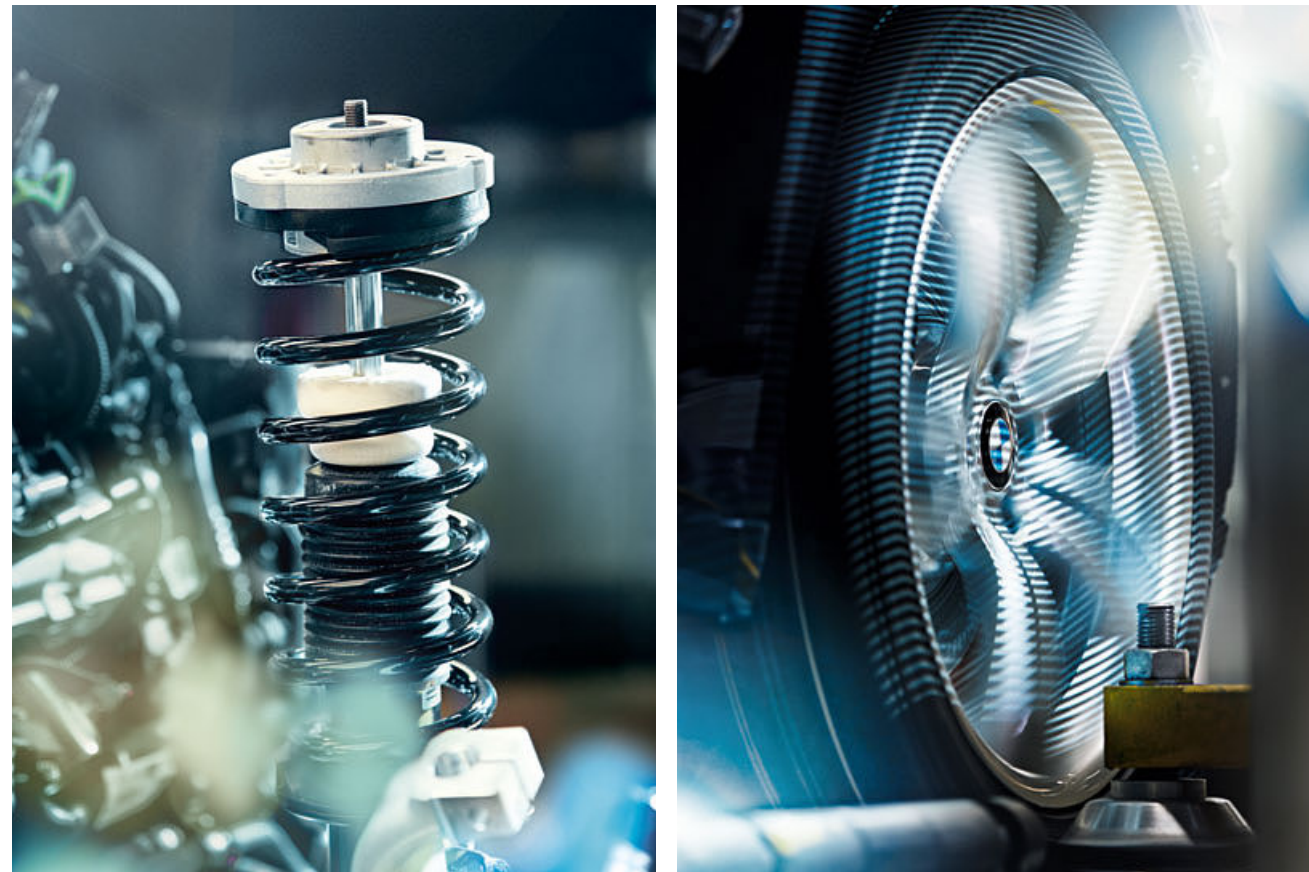
<sup>3</sup> This function may be limited in darkness and fog.

<sup>4</sup> As part of BMW ConnectedDrive, the system automatically updates the maps in selected European countries up to four times per year for three years, without licence charge.

## Chassis.

### A solid foundation for superior driving dynamics.

In the BMW 1 Series, a whole host of innovative technologies help you enjoy your on-road moments. Many of these systems are intelligently interlinked. It's this interplay that helps give drivers an optimally enjoyable experience alongside maximum possible safety, every straight, every corner, every second.



#### BMW xDRIVE.

The intelligent BMW xDrive all-wheel drive system adapts perfectly to even the most challenging road surface conditions, ensuring optimal traction at all times. xDrive and Dynamic Stability Control (DSC) ensure that the BMW remains perfectly stable. Controlled via the DSC sensor, xDrive flexibly and quickly distributes drive power between the axles in order to prevent oversteer or understeer from developing, thereby ensuring outstanding directional stability. When faced with difficult road conditions, DSC doesn't need to intervene as much. BMW xDrive combines all the advantages of an all-wheel drive system – traction, directional stability and driving safety – with classic BMW agility for even more driving pleasure.



The standard **Driving Experience Control** lets the driver choose between the standard COMFORT mode, the more efficient ECO PRO mode, and the SPORT and SPORT+<sup>1</sup> modes, for an even more dynamic drive. ECO PRO mode adjusts the characteristics of the optional, 8-speed Steptronic transmission<sup>2</sup> (if present) and the heating/air conditioning settings to make the drive as fuel-efficient as possible.

The **Adaptive suspension** (optional) is set ten millimetres lower, further increasing the vehicle's full dynamic potential. The driver can adjust the suspension settings via the Driving Experience Control to enable whichever driving style is most appealing at the time – from comfortable to extremely athletic. Whichever setting is chosen, the Adaptive suspension's electrically controlled dampers calibrate to suit the road conditions within fractions of a second. The system also uses numerous sensors that measure wheel vibrations, as well as vehicle speed, in order to achieve optimal damping and vehicle safety.

An ideal **axle load distribution of 50 : 50** helps ensure perfect balance between the front and rear axles, guaranteeing great directional stability, agile handling and a precise steering response. Other typical BMW construction characteristics such as the short overhangs, long wheelbase and a low centre of gravity promote directional stability and suspension comfort in addition to the overall sense of dynamism.

The optionally available **variable sport steering**<sup>2</sup> with Servotronic creates a direct and agile steering response and ensures less physical effort is required to turn the wheel. It reacts to the angle of the steering wheel by varying the steering ratio. This improves handling when using a sporty driving style as well as comfort when parking or turning.

The optional **8-speed Steptronic transmission**<sup>3</sup> sets a new benchmark in terms of comfort, dynamic performance and efficiency and is a key element of BMW EfficientDynamics. The unusually fine increments between gears facilitate optimum power delivery at all speeds. This reduces fuel consumption significantly, while allowing the driver to enjoy increased sportiness and dynamic performance. The engine speed is reduced, particularly at high speeds, which in turn reduces both fuel consumption and engine noise. The converter clutch also helps – even if the car is in manual mode. The fast engine speed transitions and precise transmission tuning guarantee incredibly smooth gear shifts.

<sup>1</sup> Only in conjunction with the Sport Line model, M Sport package, Adaptive suspension, variable sport steering and Steptronic Sport transmission.

<sup>2</sup> Standard with M135i and M135i xDrive.

<sup>3</sup> Standard for 120d xDrive and 125d. M135i xDrive standard with 8-speed Steptronic Sport transmission.



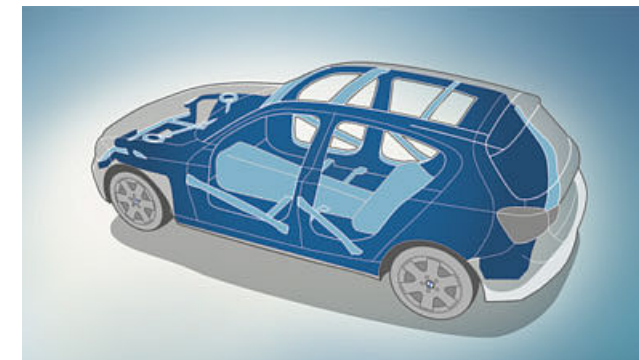
## Safety.

### Unparalleled safety with the latest BMW technology.

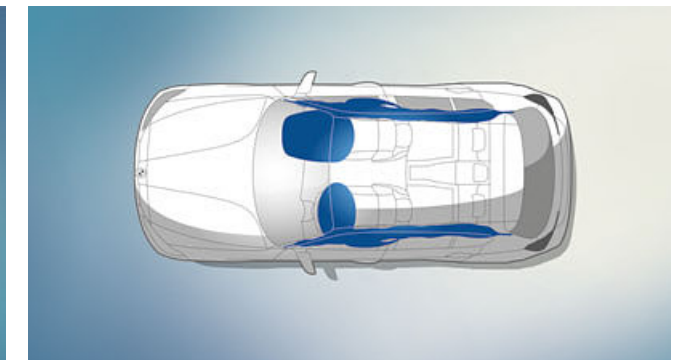
In the BMW 1 Series you'll experience the very latest technologies that are constantly reliable. Superb handling and innovative equipment come standard. BMW drivers benefit from bleeding-edge technologies that provide optimal support in every situation. You'll feel safe and protected, no matter where your journey takes you.



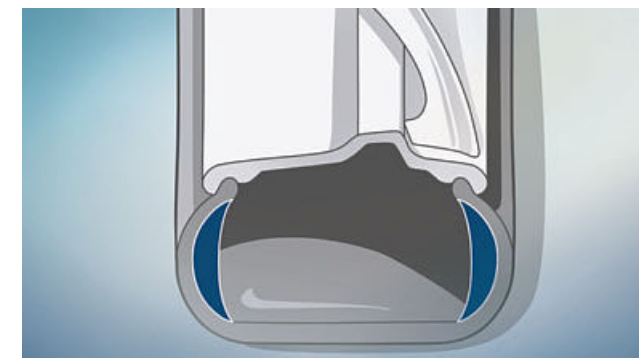
Functionally versatile. Uniquely safe. The BMW 1 Series offers a broad spectrum of state-of-the-art safety systems. The Intelligent emergency call, as standard, is a valuable aid whenever you take to the road. If there's an accident, the system delivers help, fast, as specially trained personnel at the BMW call centre link up to the nearest rescue centre – without needing to use your own mobile. It transmits information regarding the vehicle's current location and the severity of the accident. The Intelligent emergency call can also be triggered manually, for instance when you need to help out other road users.



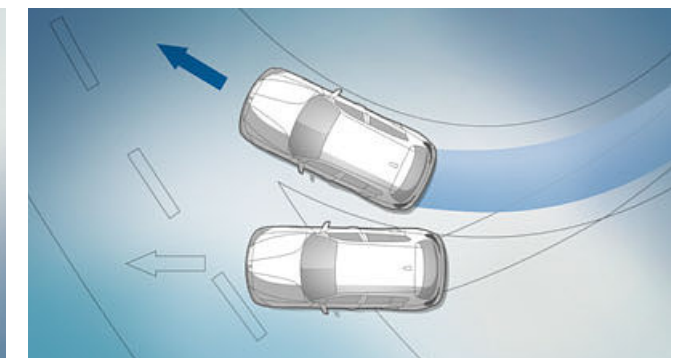
■ The functional structure of the **passenger cell** is composed of a specialised system of beams and nodal connections, featuring intelligent materials that deliver maximum passive safety in the event of a front, side or rear collision.



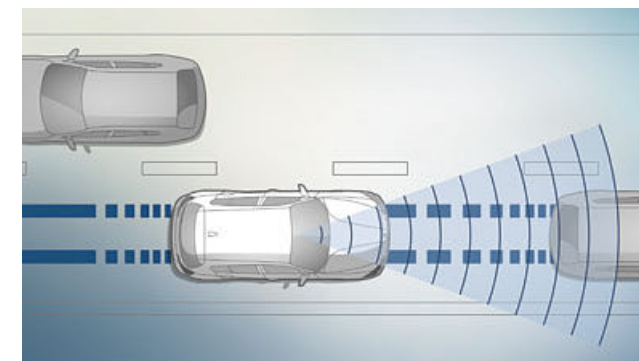
■ **Airbags** for the driver and front passenger are an integral part of the optimally coordinated safety components in a BMW. Overall, six airbags provide targeted protection: the driver and front passenger airbags, the head airbags for the entire window surface on the side, and the side airbags integrated into the front seat backrests.



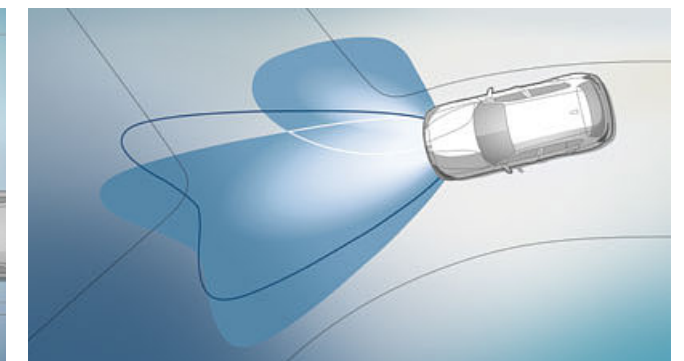
□ **Runflat tyres** (optional) feature reinforced side walls so they don't loosen from the rim if the air pressure drops, making it possible to continue driving to the nearest garage.



■ **Dynamic Stability Control (DSC)** recognises any risk of skidding and stabilises the vehicle. Its extended functionality includes Cornering Brake Control (CBC), the hill-start and braking assistant, brake drying and braking readiness.



□ The optional **approach control warning<sup>1</sup>** with light city braking function (part of the Driving Assistant package) actively helps the driver to avoid or reduce the severity of a rear-end collision. It is active at up to 60 km/h and preconditions the brakes for faster responsiveness. In an emergency, the system initiates braking to significantly reduce the collision speed.



□ The optional **Adaptive LED Headlights** with full LED technology include integrated turn indicators, low-beam headlights, high-beam headlights, as well as daytime running lights for safety and optimal illumination of the road. The High-beam assistant and Adaptive headlights with variable light control, including cornering lights, significantly enhance visibility at night.

<sup>1</sup> This system may have limited functionality in darkness and fog.



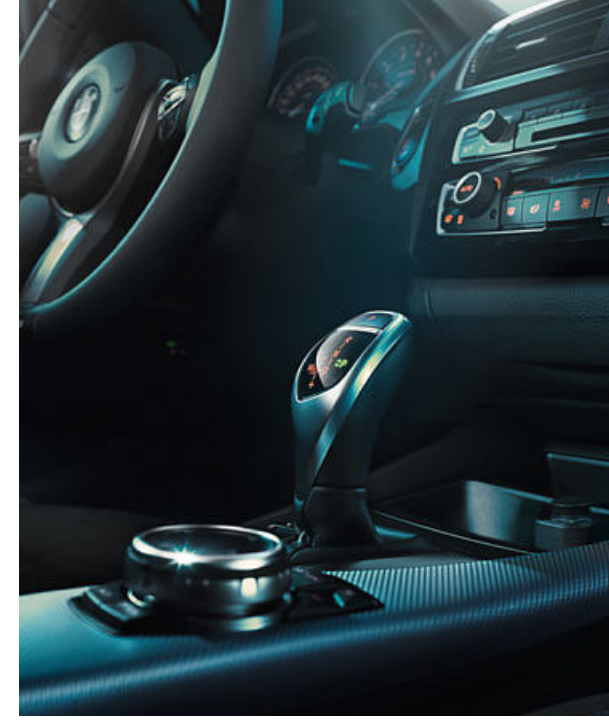
# INDIVIDUALITY AND CHOICE.

**EQUIPMENT:** BMW lines, M Performance Automobiles, equipment highlights, wheels and tyres and Original BMW Accessories.

**COLOURS:** Exterior and interior colour schemes.

**TECHNICAL DATA:** vehicle weight, engine, transmission, driving performance, fuel consumption, wheels and technical drawings.

**BMW SERVICE:** BMW Service, BMW Financial Services and BMW Experience.



# BASIC.

■ Standard equipment □ Optional equipment

01 ■



04 ■



02 ■



03 ■



05 □



06 □



**[ 01 ]** The BMW 1 Series in the optional paint finish Mineral White metallic.

**[ 03 ]** The rain sensor including automatic headlight activation automatically switches on the windscreen wipers and the low-beam headlights.

**[ 02 ]** The arrangement of the controls in the cockpit and its overall design are characteristic of the BMW focus on driver-oriented design.

**[ 04 ]** Characteristic, two-part LED shaped rear lights emphasize the dynamism of the BMW 1 Series.

**[ 05 ]** The interior with standard seats in the optional cloth/leather combination 'Path' in Silver/Black is a classic example of driver-oriented BMW design.

**[ 06 ]** 16" light alloy wheels Star-spoke style style 654, 7J x 16 with 205/55 R16 tyres.

# URBAN LINE.

■ Standard equipment □ Optional equipment

## Interior equipment features:

- door sill finishers in aluminium with BMW designation
- seats in cloth/leather combination 'Path' Silver/Black
- seats in leather 'Dakota' Oyster, other upholstery options are available
- sport leather steering wheel
- car key with Pearl Chrome detailing
- interior trim finishers in white acrylic glass with structural embossing and Oxide Silver matt accents
- interior trim finishers in fine-wood trim 'Fineline' Stream with Oxide Silver matt accents; other interior trim finisher options are available
- orange or blue variable Ambient light
- B-pillar illumination
- lights package

## Exterior equipment features:

- BMW kidney grille with nine exclusively designed slats in Oxide Silver matt and kidney grille frame in Chrome high-gloss
- front bumper with characteristic design elements in Oxide Silver matt and Black high-gloss
- 16" light alloy wheels V-spoke style 411
- 17" light alloy wheels V-spoke style 412 in Bicolour, other wheels are available
- Urban Line designation on the side of the vehicle
- rear bumper with characteristic design elements in Oxide Silver matt
- tailpipe trim in Chrome matt

01 □



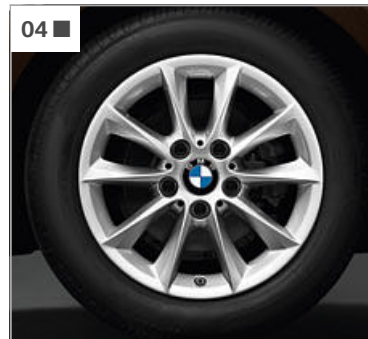
02 ■



03 ■



04 ■



05 □



[ 01 | 06 ] The BMW 118d with Urban Line in the optional paint finish Sparkling Brown metallic with as-standard 16" light alloy wheels V-spoke style 411.

[ 02 ] The BMW double kidney grille, with grille slats in Oxide Silver matt and a frame in Chrome high-gloss, offers a visual highlight at the front of the vehicle.

[ 03 ] Urban Line designation on the side of the vehicle.

[ 04 ] 16" light alloy wheels V-spoke style 411, 7J x 16 with 205/55 R16 tyres.

[ 05 ] 17" light alloy wheels V-spoke style 412 Bicolour Silver gloss-lathed, 7.5J x 17 with 225/45 R17 tyres.

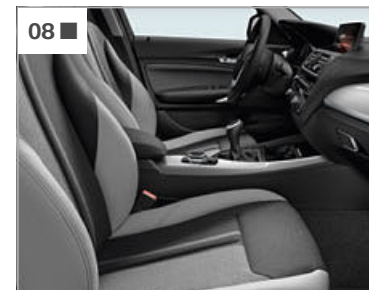
06 □



07 ■



08 ■



09 ■



10 ■



[ 07 ] A relaxing mixture of direct and indirect lighting – such as the ambient light, illuminated door handles and footwell illumination – gives the interior a luxurious ambience. The light colour can be switched from blue to orange.

[ 08 ] Passengers are comfortably accommodated on elegant seats in cloth/leather combination with a 'Path' Silver or Pearl Grey design.

[ 09 ] The car key with integrated remote control can be used to easily lock and unlock all the doors and the tailgate, as well as to open the fuel cap at the push of a button.

[ 10 ] The multifunction buttons on the steering wheel can be used to operate the telephone, voice control and audio functions, as well as the manual speed limiter.

# THE SPORT LINE.

■ Standard equipment □ Optional equipment

## Interior equipment features:

- door sill finishers in aluminium with BMW designation
- sport seats in cloth 'Corner' Anthracite with Red highlights
- sport seats in leather 'Dakota'
- sport leather steering wheel with red contrast stitching
- car key with red detailing
- instrument cluster with chronoscales and red accents
- interior trim finishers in Black high-gloss with Coral Red matt accents; other interior trim finisher options are available
- orange or white variable Ambient light
- Driving Experience Control with the additional SPORT+ mode
- lights package

## Exterior equipment features:

- BMW kidney grille with nine exclusively designed slats with Black high-gloss fronts in Chrome high-gloss
- front bumper with characteristic design elements in Black high-gloss
- 16" light alloy wheels Star-spoke style 376
- 17" light alloy wheels Star-spoke style 379 in bi-colour Orbit Grey, gloss-lathed; other wheels are available
- Sport Line designation on the side of the vehicle
- exterior mirror caps in Black, or in body colour
- rear bumper with characteristic design elements in Black high-gloss
- Black, chrome-plated tailpipe trim

01 □



02 ■



03 ■



**[ 01 | 08 ]** The BMW 120d xDrive with Sport Line in paint finish Crimson Red non-metallic with optional 17" light alloy wheels Star-spoke style 379.

**[ 02 ]** Sport Line designation on the side of the vehicle.

**[ 03 ]** The car key with integrated remote control can be used to easily lock and unlock all the doors and the tailgate, as well as open the fuel cap at the push of a button.

**[ 04 ]** The fog lights in the front apron ensure better visibility and improved safety.

04 ■



05 ■



06 □



07 ■



**[ 05 ]** 16" light alloy wheels Star-spoke style 376, 7J x 16 with 205/55 R16 tyres.

**[ 06 ]** 17" light alloy wheels Star-spoke style 379, bicolour Orbit Grey/gloss-lathed, 7.5J x 17 with 225/45 R17 tyres.

**[ 07 ]** Interior trim finishers in Black high-gloss with highlight trim finishers Coral Red matt lend the car a dynamic ambience (shown here with further optional equipment).

08 □



09 ■



10 ■



**[ 09 ]** The driver and front passenger are provided with optimum support on sport seats upholstered in cloth 'Corner' Anthracite with red highlights.

**[ 10 ]** With the high-grip Sport leather steering wheel with red contrast stitching, the driver always maintains perfect control of the vehicle. The instrument cluster with a special dial design, red detailing and chronoscales with finer increments also contributes to the interior's athletic appearance.

# M SPORT PACKAGE.

powered by 

■ Standard equipment □ Optional equipment

## Interior equipment features:

- M door sill finishers, M driver footrest, M leather steering wheel
- sport seats for driver and front passenger in cloth/Alcantara combination 'Hexagon', Anthracite in exclusive M style
- sport seats for driver and front passenger in leather 'Dakota'
- BMW Individual headliner in Anthracite
- instrument cluster with chronoscapes and red accents
- interior trim finishers Aluminium Hexagon with accents in Blue matt or Black high-gloss.
- shortened gear lever with M logo<sup>1</sup>
- Driving Experience Control with the additional SPORT+ mode
- orange or white variable Ambient light
- car key with Estoril Blue detailing

## Exterior equipment features:

- M Aerodynamics package with front apron, side skirts and rear apron with Dark Shadow metallic diffuser insert
- BMW kidney grille with nine exclusively designed slats with Black high-gloss fronts, kidney grille frame in Chrome high-gloss
- 17" M light alloy wheels Double-spoke style 383 M with mixed tyres
- 18" M light alloy wheels Double-spoke style 461 M in Silver or Ferric Grey metallic with mixed tyres
- M Sport suspension, alternatively standard suspension or Adaptive M suspension
- BMW Individual high-gloss Shadow Line
- M logo on the sides
- tailpipe trim in Chrome high-gloss
- exclusive paint finish in Estoril Blue metallic; other paint finishes are available
- M Sport brakes

01 □



02 ■



**[ 01 | 08 ]** The BMW 1 Series M Sport package in optional paint finish Estoril Blue metallic with optional 18" light alloy wheels Double-spoke style 461 M with mixed tyres.

**[ 02 ]** M door sill finishers with the M logo on chrome-plated inserts in the front sills emphasise the vehicle's athletic ambitions.

**[ 03 ]** 17" M light alloy wheels Star-spoke style 383 M, front 7.5J x 17 with 225/45 R17 tyres, rear 8J x 17 with 245/40 R17 tyres.

**[ 04 ]** Enlarged air inlets provide a dynamic appearance.

03 ■



04 ■



07 ■



**[ 05 ]** 18" M light alloy wheels Double-spoke style 461 M in Ferric Grey with mixed tyres, front 7.5J x 18 with 225/40 R18 tyres, rear 8J x 18 with 245/35 R18 tyres.

**[ 06 ]** The M footrest, made of brushed stainless steel, features a stamped 'M' logo in the rubber pad that adds a dynamic touch to the footwell.

**[ 07 ]** Interior trim finishers in Aluminium 'Hexagon' with highlight trim finishers Blue matt exquisitely highlight the vehicle's dynamic performance.

05 □



06 ■



08 □



09 ■



**[ 09 ]** The M Sport package features sport seats in cloth/Alcantara combination 'Hexagon' Anthracite with Royal Blue contrast stitching and the exclusive M style. These seats offer the driver and front passenger optimal support.

10 ■



**[ 10 ]** The driver always maintains perfect control of the vehicle thanks to the M leather steering wheel with a three-spoke design, contoured thumb rests and multifunction buttons.

<sup>1</sup> Only in conjunction with 6-speed transmission.

## THE BMW M135i/M135i xDrive. M GENE INCLUDED.

The BMW M135i embodies supreme driving pleasure and a high degree of driving dynamics. It's high-revving M Performance TwinPower Turbo 6-cylinder inline petrol engine with a capacity of 3.0 litres delivers 240 kW (326 hp) at 5800–6000 rpm and accelerates the vehicle from 0 to 100 km/h in just 5.1 seconds (4.9 s with the optional 8-speed Steptronic Sport transmission; M135i xDrive: 4.7 s with the standard 8-speed Steptronic Sport transmission). Furthermore, the engine delivers a powerful sound and a high degree of thrust in every driving situation thanks to 450 Nm of torque. A suspension lowered by ten mm with dynamic and tight M-specific damper settings provides a firm transmission of power to the road. An M Sport brake with blue brake callipers and the M logo ensures maximum deceleration even for the most distinctly dynamic driving style. The standard variable sport steering with M-specific characteristics provides the driver with crisp and reliable steering response. An M Aerodynamics package with unique air intakes in the front, 18" M light alloy wheels with performance tyres and two tailpipes round off the exterior features. In the interior, such features as the M door sill finishers, the M sports seats, the M leather steering wheel and M-specific instruments<sup>1</sup> further enhance the vehicle's sporty feel.

powered by 



18" M light alloy wheels Double-spoke style 436 M with mixed tyres, front 7.5 J x 18 with 225/40 R 18 tyres, rear 8 J x 18 with 245/35 R 18 tyres.

**Logo.** Robust "M135i" lettering for the top model in the BMW 1 Series.

<sup>1</sup> Only in conjunction with the instrument cluster with extended functionality.

Fuel consumption and CO<sub>2</sub> emissions are affected by the selected wheel and tyre sizes. For more information, please see pages 56/57 or consult your BMW partner. The figures for output, fuel consumption and CO<sub>2</sub> emissions refer to vehicles with standard transmission.

## EQUIPMENT HIGHLIGHTS.

■ Standard equipment □ Optional equipment



**[ 01 ]** The light generated by the LED fog lights<sup>1</sup> is very similar to daylight and enables the driver to see better and drive more safely in inclement weather.

**[ 02 ]** The flat halogen double round headlights with LED daytime running lights accentuate the front's athletic look.

**[ 03 ]** The two-part rear lights, including rear fog lights, are based on LED technology and are equipped with a dynamic brake light function.

**[ 04 ]** The rain sensor including automatic headlight activation automatically switches on the windscreen wipers and the low-beam headlights.

**[ 05 ]** Adaptive LED headlights including low-beam and high-beam headlights, LED turn indicators, LED fog lights and High-beam assistant.

**[ 06 ]** The Chrome Line<sup>2</sup> Exterior with details in Chrome high-gloss gives the vehicle a particularly sophisticated look.

**[ 07 ]** BMW Individual high-gloss Shadow Line<sup>3</sup> includes external equipment features in Black high-gloss.

**[ 08 ]** The electric glass roof allows airflow to be regulated, creating a pleasant in-car climate. The integrated wind deflector guarantees a high level of acoustic comfort.



**[ 09 ]** The lights package features numerous LED lights both inside and outside the car for increased convenience and a premium look.<sup>3</sup>

**[ 10 ]** The automatic air conditioning with 1-zone control including micro-filter ensures a pleasant temperature in the vehicle.

**[ 11 ]** The sport seats<sup>3</sup> for driver and front passenger feature optimum support and various adjustment options, including backrest width.

**[ 12 ]** The Automatic air conditioning with 2-zone control includes Automatic Air Recirculation (AAR) with an active carbon filter, as well as fogging and solar sensors.<sup>3</sup>

**[ 13 ]** The through-loading system has rear seat backrests that can be divided in a 40:20:40 ratio, guaranteeing flexibility when transporting people and objects.

**[ 14 ]** Leather steering wheel, 375 mm in diameter, three spokes, steering wheel rim, gear lever and handbrake lever in leather (shown here with optional multifunction buttons).

**[ 15 ]** The 8-speed automatic Steptronic sport transmission<sup>4</sup> allows for both comfortable coasting and a dynamic driving style.

**[ 16 ]** The black Sport leather steering wheel<sup>2</sup> with a thick rim and contoured thumb rests has an exceptionally pleasant, high-grip feel (shown here with optional multifunction buttons).

**[ 17 ]** M Leather steering wheel including multifunction buttons, steering wheel rim in leather 'Walknappa' Black with contoured thumb rests.<sup>3</sup>

<sup>1</sup> Only available in conjunction with Adaptive LED headlights.

<sup>2</sup> Standard with the 125i and 125d.

<sup>3</sup> Standard with the M135i and M135i xDrive.

<sup>4</sup> Standard with the M135i xDrive.



# EQUIPMENT HIGHLIGHTS.

■ Standard equipment □ Optional equipment



**[ 01 ]** Front and rear Park Distance Control (PDC) makes parking and manoeuvring in tight spaces much easier.

**[ 04 ]** The rear view camera shows the area behind the car on the Control Display. Interactive guidelines and obstacle markings help the driver when reversing.

**[ 07 ]** The Driving Assistant safety equipment draws the driver's attention to an unintentional lane change or possible collision and brakes automatically in the event of an emergency.<sup>5</sup>

**[ 10 ]** Navigation system Professional<sup>2</sup> including splitscreen function and radio Professional with DVD player.

**[ 13 ]** The iDrive Touch Controller (part of the BMW navigation system Professional): intuitive control via the iDrive Controller touchpad.

**[ 16 ]** The instrument cluster with extended features includes an Info Display for the presentation of navigation instructions and other messages.

**[ 02 ]** The low-set Adaptive suspension with variable damper control allows the driver to choose between comfortable or dynamic suspension settings.

**[ 05 ]** Interior and driver-side exterior mirrors with automatic anti-dazzle function, including fold-in function for the exterior mirrors and automatic parking function for the front passenger exterior mirror.

**[ 08 ]** Active cruise control with Stop&Go function<sup>1</sup> maintains a preselected speed, as well as the distance to the vehicle ahead.

**[ 11 ]** Real Time Traffic Information (RTTI)\* delivers traffic information about motorways, main roads and country roads, as well as numerous urban routes, practically in real-time.

**[ 14 ]** The Harman Kardon HiFi loudspeaker system with an external 360 watt amplifier in the luggage compartment consists of twelve loudspeakers incl. two central subwoofers.

**[ 17 ]** Radio BMW Professional includes features such as a built-in 6.5" LCD colour display, iDrive Controller, MP3-compatible CD player and six loudspeakers.

**[ 03 ]** The sun protection glazing for the rear window and rear side windows (tinted) reduces the degree to which the interior heats up.

**[ 06 ]** The Parking assistant makes parking parallel and perpendicular to the road easier. It does the steering while the driver remains in control of the accelerator, brake and gears.

**[ 09 ]** The comfort access system allows passengers to enter the car via the front doors and open the tailgate without active use of the key.

**[ 12 ]** Navigation system Business with iDrive Controller and a built-in 6.5" LCD colour display, including radio Professional with CD player.

**[ 15 ]** Speed Limit Info<sup>3</sup> incl. no-overtaking indicator provides information on speed limits as well as no-overtaking zones.

**[ 18 ]** Convenience telephony with extended smartphone connectivity enables mobile phones to be connected with the car and hands-free facility via Bluetooth.<sup>4</sup>

\* May not be available in all countries. Please consult your BMW partner.  
<sup>1</sup> Only available for the 118i, 120i, 125i, 116d, 118d, 120d, 120d xDrive and 125d.  
<sup>2</sup> As part of BMW ConnectedDrive, the system automatically updates the maps in selected European countries up to four times per year for three years, without licence charge.  
<sup>3</sup> Only available in conjunction with the navigation system and the instrument cluster with extended features.  
<sup>4</sup> More information on Bluetooth compatibility with smartphones and other mobile devices is available at [www.bmw.com/bluetooth](http://www.bmw.com/bluetooth)  
<sup>5</sup> Function may be limited in the dark or in fog.

# WHEELS AND TYRES.

■ Standard equipment □ Optional equipment ○ Accessories



**[ 01 ]** 16" light alloy wheels V-spoke style 378, 7J x 16 with 205/55 R16 tyres.

**[ 04 ]** 17" light alloy wheels Y-spoke style 380, 7J x 17 with 205/50 R17 tyres (standard with the 125i and 125d).

**[ 07 ]** 19" BMW M Performance wheels Double-spoke style 624 M, mixed tyres with runflat properties, front 7.5J x 19 with 225/35 R19 tyres, rear 8J x 19 with 245/30 R19 tyres.<sup>1</sup>

**[ 02 ]** 17" light alloy wheels Double-spoke style 655, 7.5J x 17 with 225/45 R17 tyres.

**[ 05 ]** 18" light alloy wheels Double-spoke style 385 with mixed tyres, front 7.5J x 18 with 225/40 R18 tyres, rear 8J x 18 with 245/35 R18 tyres.

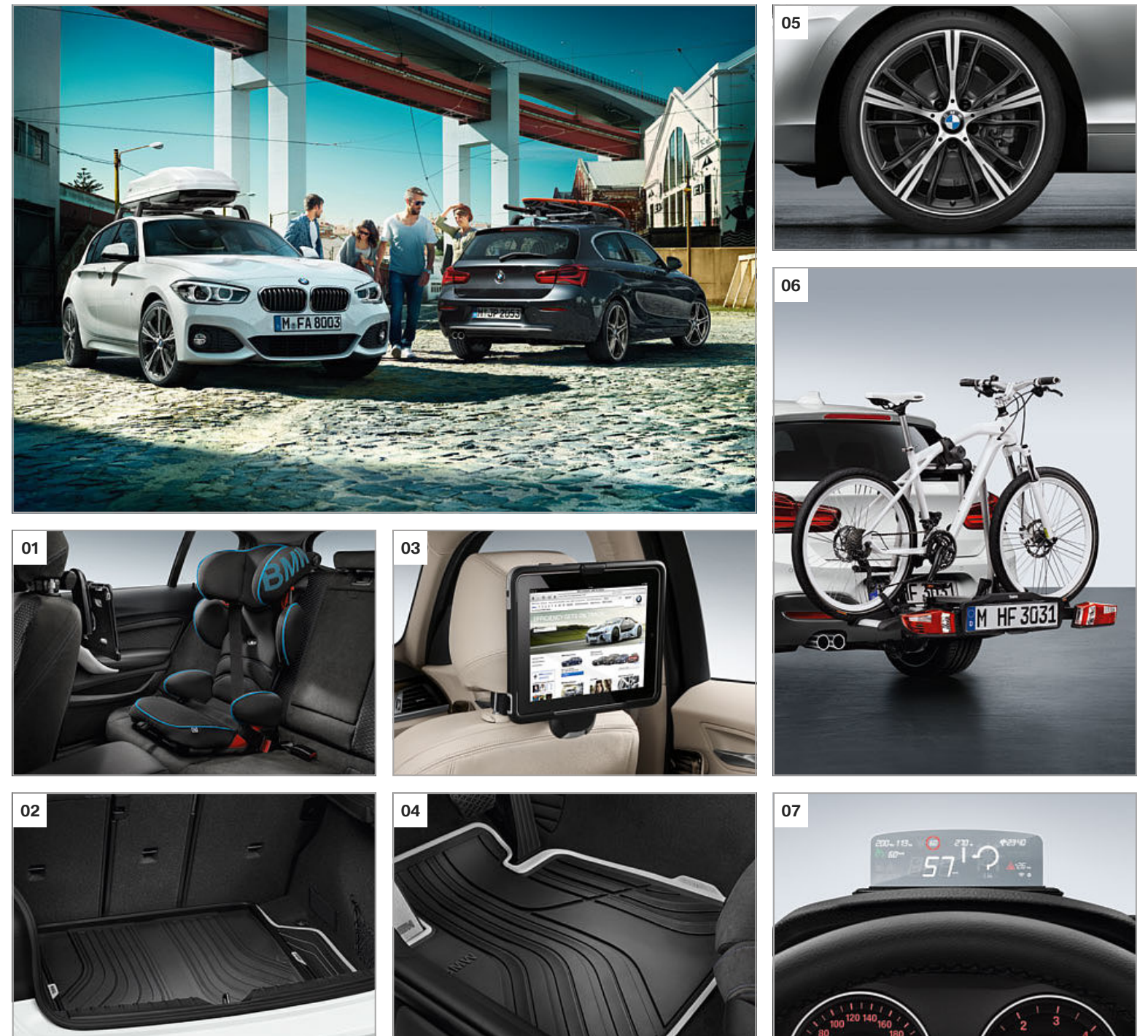
**[ 08 ]** 16" light alloy wheels Turbine style 406, BMW EfficientDynamics, aerodynamically optimised, Orbit Grey, gloss lathed, 7J x 16, with 205/55 R16 tyres.

**[ 03 ]** 17" light alloy wheels Turbine style 381, 7.5J x 17 with 225/45 R17 tyres.

**[ 06 ]** 16" light alloy wheels Star-spoke style 654, 7J x 16 with 205/55 R16 tyres.

**[ 09 ]** 19" light alloy wheels 361 in black with a red ring. Complete wheel set with run-flat mixed tyres, size 7.5J x 19 (front) and 8J x 19 (rear).<sup>1</sup>

# ORIGINAL BMW ACCESSORIES.



**[ 01 ]** Adjustable seat in black/blue for children aged approximately three to twelve (approximately 15–36 kg). With a variable backrest angle and air pads around the head area for optimal side-impact protection.

**[ 03 ]** Secure base for the Apple iPad™ 2, 3 or 4. The holder is snapped into the basic carrier and can be rotated 360° as well as tilted to the desired angle.

**[ 05 ]** 19" Light alloy wheels 660 in Orbit Grey, gloss-lathed on the visible side. RDC complete wheel set with run-flat mixed tyres, size 7.5J x 19 (front) and 8J x 19 (rear).

**[ 02 ]** Anti-slip, water-resistant, durable mat for protecting the luggage compartment from dirt and moisture. In black/light grey, complements the Urban Line.

**[ 04 ]** Perfectly fitted protection against moisture and dirt, the mats keep feet from getting wet in the front footwell. The black/light grey design perfectly complements the Urban Line.

**[ 06 ]** Light, stable holder for two bicycles/e-bikes (can be extended to accommodate three bicycles). Max. load 60 kg, can be folded together for a minimal storage size.

**[ 07 ]** The transparent display mounted on the cockpit transmits navigation and vehicle information into the driver's field of vision, thereby improving safety.

<sup>1</sup> These wheel designs and more can be found under Original BMW Accessories at [www.bmw.com/accessories](http://www.bmw.com/accessories)

Discover the all-round innovative solutions on offer in many categories: exterior, interior, communication & information and transport & luggage compartment solutions. Your BMW partner will be happy to advise you and provide you with a special catalogue detailing the entire range of Original BMW Accessories. For more information visit [www.bmw.com/accessories](http://www.bmw.com/accessories)

# EXTERIOR COLOURS.

■ Standard equipment □ Optional equipment



■ Non-metallic 668 Black



■ Non-metallic A61 Crimson Red



□ Non-metallic 300 Alpine White<sup>1</sup>



□ Metallic A83 Glacier Silver<sup>2</sup>

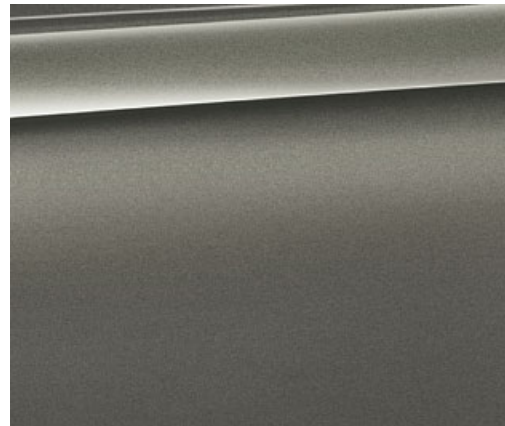
## M SPORT PACKAGE



□ Metallic B45 Estoril Blue<sup>3</sup>



□ Metallic 475 Black Sapphire<sup>2</sup>



□ Metallic C08 Platinum Silver



□ Metallic C10 Mediterranean Blue



□ Metallic B53 Sparkling Brown



□ Metallic B38 Midnight Blue



□ Metallic B44 Valencia Orange<sup>2</sup>



□ Metallic A96 Mineral White



□ Metallic B39 Mineral Grey<sup>2</sup>

<sup>1</sup> Standard with the M Sport package, M135i and M135i xDrive.  
<sup>2</sup> Also optionally available with the M Sport package, M135i and M135i xDrive.  
<sup>3</sup> Exclusively available with the M Sport package, M135i and M135i xDrive.

**[Colour samples]** These colour samples are intended as an initial guide to the colours and materials available for your BMW. However, experience has shown that printed versions of paint, upholstery and interior trim colours cannot in all cases faithfully reproduce the appearance of the original colour. Please discuss your preferred colour choices with your BMW partner or dealership. There you can also see original samples and be assisted with special requests.

# INTERIOR COLOURS.

■ Standard equipment □ Optional equipment



## FABRICS

	Available with	
	<input checked="" type="checkbox"/> Basic <input type="checkbox"/> Urban Line <input type="checkbox"/> Sport Line <input type="checkbox"/> M Sport package	<b>Cloth 'Move'</b> BDAT Anthracite <sup>1</sup>
	<input type="checkbox"/> Basic <input checked="" type="checkbox"/> Sport Line	<b>Cloth 'Corner'</b> CCL1 Anthracite with grey highlights
	<input checked="" type="checkbox"/> Sport Line	<b>Cloth 'Corner'</b> CCL2 Anthracite with red highlights <sup>2</sup>

## CLOTH/LEATHER COMBINATION

	Available with	
	<input type="checkbox"/> Basic <input checked="" type="checkbox"/> Urban Line	<b>Cloth/leather combination 'Path'</b> CPH6 Silver/Black <sup>1</sup>
	<input checked="" type="checkbox"/> Urban Line	<b>Cloth/leather combination 'Path'</b> CPLJ Silver/Pearl Grey <sup>1</sup>
	<input checked="" type="checkbox"/> M Sport package	<b>Cloth/Alcantara upholstery 'Hexagon'</b> HAAT Anthracite <sup>2,3</sup>

## LEATHER

	Available with	
	<input type="checkbox"/> Basic <input type="checkbox"/> Urban Line <input type="checkbox"/> Sport Line <input type="checkbox"/> M Sport package	<b>Leather 'Dakota'</b> LCSW Black <sup>5</sup>
	<input type="checkbox"/> Basic <input type="checkbox"/> Urban Line <input type="checkbox"/> Sport Line <input type="checkbox"/> M Sport package	<b>Leather 'Dakota'</b> LCCX Oyster <sup>5</sup>
	<input type="checkbox"/> Sport Line	<b>Leather 'Dakota'</b> LCL3 Black, red highlights
	<input type="checkbox"/> Sport Line <input type="checkbox"/> M Sport package	<b>Leather 'Dakota'</b> LCL5 Coral Red, black highlights <sup>5</sup>

## INTERIOR TRIM FINISHERS

	Available with	
	<input checked="" type="checkbox"/> Basic	4CG Satin Silver matt
	<input type="checkbox"/> Basic <input checked="" type="checkbox"/> Sport Line <input checked="" type="checkbox"/> M Sport package	4GD high-gloss Black with highlight trim finishers Oxide Silver matt <sup>3</sup>
	<input checked="" type="checkbox"/> Sport Line	4LV high-gloss Black with highlight trim finishers Coral Red matt
	<input checked="" type="checkbox"/> Urban Line	4GE acrylic glass Black with highlight trim finishers Oxide Silver matt
	<input checked="" type="checkbox"/> Urban Line	4GF acrylic glass White with structural embossing and highlight trim finishers Oxide Silver matt <sup>3</sup>
	<input type="checkbox"/> Basic <input type="checkbox"/> Urban Line <input type="checkbox"/> Sport Line <input checked="" type="checkbox"/> M Sport package	4GK Aluminium, finely brushed lengthwise with highlight trim finisher Oxide Silver matt <sup>3</sup>
	<input type="checkbox"/> Basic <input type="checkbox"/> Urban Line <input type="checkbox"/> Sport Line <input checked="" type="checkbox"/> M Sport package	4FT Aluminium, finely brushed lengthwise with highlight trim finishers Black high-gloss <sup>3</sup>
	<input checked="" type="checkbox"/> M Sport package	4WF Aluminium 'Hexagon' with highlight trim finishers Blue matt <sup>3,4</sup>
	<input checked="" type="checkbox"/> M Sport package	4WG Aluminium 'Hexagon' with highlight trim finishers Black high-gloss <sup>3</sup>
	<input type="checkbox"/> Basic <input type="checkbox"/> Urban Line <input type="checkbox"/> Sport Line <input type="checkbox"/> M Sport package	4LC fine-wood trim 'Fineline' Stream with highlight trim finishers Oxide Silver matt <sup>5</sup>

## INTERIOR COLOURS

	Available with	
	<input checked="" type="checkbox"/> Basic <input checked="" type="checkbox"/> Urban Line <input checked="" type="checkbox"/> Sport Line <input checked="" type="checkbox"/> M Sport package	Black <sup>3</sup>

Please note that even normal long or short-term use can lead to permanent upholstery damage. This can be caused in particular by non-colourfast clothing.

<sup>1</sup> Not available in conjunction with sport seats.  
<sup>2</sup> Only available in conjunction with sport seats.  
<sup>3</sup> Standard with the M135i and M135i xDrive.  
<sup>4</sup> Not available in conjunction with leather 'Dakota' Coral Red with black highlights.  
<sup>5</sup> Optionally available with M135i and M135i xDrive.

		116i	118i	120i	125i	M135i M135i xDrive	114d*	116d	116d EfficientDynamics Edition	118d 118d xDrive <sup>7</sup>	120d 120d xDrive <sup>8</sup>	125d <sup>8</sup>
--	--	------	------	------	------	-----------------------	-------	------	--------------------------------------	----------------------------------	----------------------------------	-------------------

Weight												
Unladen weight EU <sup>1</sup> BMW 1 Series 3-door	kg	1375	1375 [1390]	1375 [1390]	1425 [1445]	1505 [1520]	1395	1395 [1425]	1395	1425 [1450]	1445 [1460]	[1500]
Unladen weight EU <sup>1</sup> BMW 1 Series 5-door	kg	1380	1380 [1395]	1380 [1395]	1430 [1450]	1505 [1525]	1395	1395 [1425]	1395	1425 [1450]	1450 [1465]	[1505]
Unladen weight EU <sup>1</sup> BMW 1 Series 3-door/ BMW 1 Series 5-door (xDrive)	kg	–	–	–	–	[1590/1595]	–	–	–	1495/1500	[1525/1530]	–
Max. permissible weight BMW 1 Series 3-door	kg	1865	1865 [1880]	1865 [1880]	1915 [1935]	1995 [2010]	1885	1885 [1915]	1885	1915 [1940]	1935 [1950]	[1990]
Max. permissible weight BMW 1 Series 5-door	kg	1870	1870 [1885]	1870 [1885]	1920 [1940]	1995 [2015]	1885	1885 [1915]	1885	1915 [1940]	1940 [1955]	[1995]
Max. permissible weight BMW 1 Series 3-door/ BMW 1 Series 5-door (xDrive)	kg	–	–	–	–	[2065/2070]	–	–	–	1970/1975	2000/2005	–
Permitted load	kg	565	565	565	565	565	565	565	565	565	565	565
Permitted load (xDrive)	kg	–	–	–	–	550	–	–	–	550	[550]	–
Permitted trailer load, unbraked <sup>2</sup>	kg	650	650	670	680	–	–	690	–	690	710	710/740
Permitted trailer load, unbraked <sup>2</sup> (xDrive)	kg	–	–	–	–	–	–	–	–	710	[750]	–
Permitted trailer load, braked, max. 12 % gradient <sup>2</sup> / max 8 % gradient <sup>2</sup>	kg	1200/1200	1300/1500	1200/1200	1200/1200	–	–	1500/1500	–	1500/1500	1500/1500	1500/1500
Permitted trailer load, braked, max. 12 % gradient <sup>2</sup> / max 8 % gradient <sup>2</sup> (xDrive)	kg	–	–	–	–	–	–	–	–	1500/1500	[1500/1500]	–

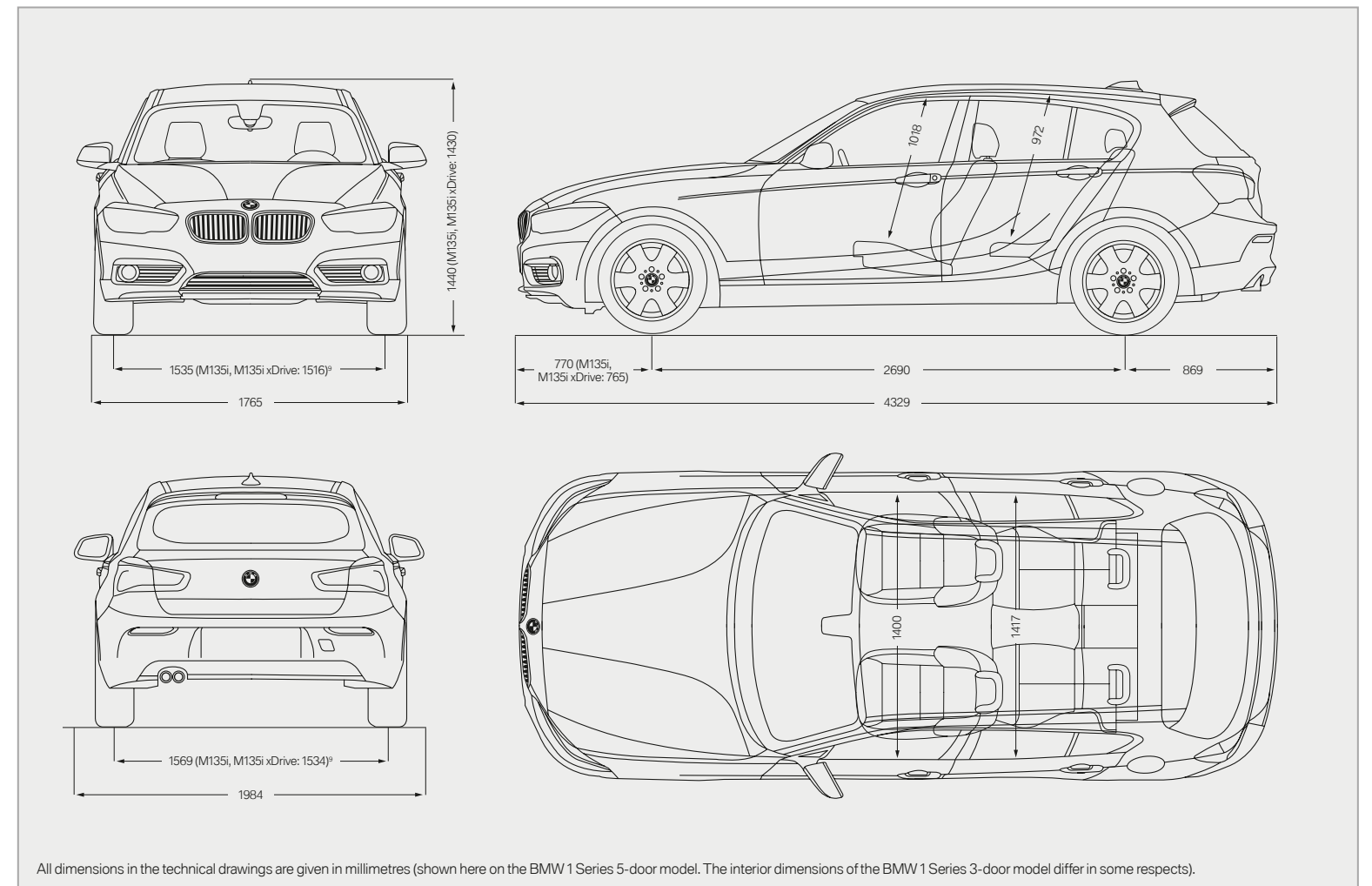
Engines <sup>3,4</sup>												
Cylinders/valves		3/4	3/4	4/4	4/4	6/4	3/4	3/4	3/4	4/4	4/4	4/4
Capacity	cc	1499	1499	1598	1997	2979	1496	1496	1496	1995	1995	1995
Max. output/engine speed	kw (hp)/rpm	80 (109)/ 4250	100 (136)/4400	130 (177)/5000	160 (218)/5000	240 (326)/5800	70 (95)/ 4000	85 (116)/ 4000	85 (116)/ 4000	110 (150)/ 4000	140 (190)/ 4000	165 (224)/ 4400
Max. torque/engine speed	Nm/rpm	180/ 1250–4250	220/ 1250–4300	250/ 1500–4500	310/ 1350–4800	450/ 1300–4500	235/1750– 2250	270/ 1750–2250	270/ 1750–2250	320/ 1500–3000	400/ 1750–2500	450/ 1500–3000

Power Transmission												
Drive configuration		Rear-wheel	Rear-wheel	Rear-wheel	Rear-wheel	Rear-wheel/ all-wheel	Rear-wheel	Rear-wheel	Rear-wheel	Rear-wheel/ all-wheel	Rear-wheel/ all-wheel	Rear-wheel
Standard transmission		6-speed manual	6-speed manual	6-speed manual	6-speed manual	6-speed manual	6-speed manual	6-speed manual	6-speed manual	6-speed manual	6-speed manual	8-speed Steptronic
Standard transmission (xDrive)		–	–	–	–	8-speed Steptronic Sport	–	–	–	6-speed manual	8-speed Steptronic	–

Performance												
Top speed	km/h	195	210 [210]	225 [222]	245 [243]	250 <sup>5</sup> [250] <sup>5</sup>	185	200 [200]	195	212/210	228/[222]	[240]
Top speed (xDrive)	s	–	–	–	–	[250] <sup>5</sup>	–	–	–	210	[222]	–
Acceleration 0–100 km/h / xDrive	s	10.9	8.5 [8.7]	7.4 [7.2]	6.4 [6.2]	5.1 [4.9]/[4.7]	12.2	10.3 [10.3]	10.4	8.3 [8.1]/8.4	7.1 [7.0]/[6.8]	[6.3]

Fuel consumption <sup>3,4</sup>												
Fuel consumption urban	l/100 km	6.3–6.8	6.2–6.7 [5.9–6.4]	7.4–7.8 [7.1–7.6]	8.6–8.9 [8.5–8.7]	10.9 [10.3]	3.9–4.4	4.3–4.8 [4.1–4.6]	3.9–4.4	4.8–5.2 [4.5–4.9]	5.0–5.5 [4.6–5.1]	[5.1–5.4]
Fuel consumption urban (xDrive)	l/100 km	–	–	–	–	[10.8]	–	–	–	5.1–5.6	[5.1–5.5]	–
Fuel consumption extra-urban	l/100 km	4.2–4.6	4.3–4.7 [4.2–4.6]	4.7–4.9 [4.6–4.9]	5.4 [5.1–5.2]	6.4 [5.9]	3.4–3.8	3.3–3.7 [3.4–3.8]	3.1–3.5	3.5–3.8 [3.4–3.8]	3.6–3.9 [3.5–3.9]	[3.9–4.1]
Fuel consumption extra-urban (xDrive)	l/100 km	–	–	–	–	[6.1]	–	–	–	3.8–4.1	[3.9–4.3]	–
Fuel consumption combined	l/100 km	5.0–5.4	5.0–5.4 [4.8–5.2]	5.7–6.0 [5.6–5.9]	6.6–6.7 [6.3–6.5]	8.0 [7.5]	3.6–4.0	3.7–4.1 [3.6–4.1]	3.4–3.8	4.0–4.3 [3.8–4.2]	4.1–4.5 [3.9–4.3]	[4.3–4.6]
Fuel consumption combined (xDrive)	l/100 km	–	–	–	–	[7.8]	–	–	–	4.3–4.7	[4.3–4.7]	–
CO <sub>2</sub> emissions combined	g/km	116–126	116–126 [112–122]	132–139 [129–137]	154–157 [148–151]	188 [175]	97–106	97–107 [96–107]	89–101	104–114 [99–110]	108–118 [103–114]	[114–121]
CO <sub>2</sub> emissions combined (xDrive)	g/km	–	–	–	–	[182]	–	–	–	113–123	[113–124]	–
Tank capacity, approx.	l	52	52	52	52	52	52	52	52	52	52	52

Wheels <sup>6</sup> /Tyres												
Tyre dimensions		195/55 R 16 H	195/55 R 16 H	195/55 R 16 W	205/50 R 17 Y	225/40/245/ 35 R 18 Y	195/55 R 16 H	195/55 R 16 H	205/55 R 16 V	195/55 R 16 W	205/55 R 16 V	205/50 R 17 Y
Wheel dimensions		6.5 J x 16	6.5 J x 16	6.5 J x 16	7 J x 17	7.5 J/ 8 J x 18	6.5 J x 16	6.5 J x 16	7 J x 16	6.5 J x 16	7 J x 16	7 J x 17
Material		steel	steel	steel	light alloy	light alloy	steel	steel	steel	steel	steel	light alloy



All dimensions in the technical drawings are given in millimetres (shown here on the BMW 1 Series 5-door model. The interior dimensions of the BMW 1 Series 3-door model differ in some respects).

<sup>1</sup> The figure quoted includes a 90 % full tank, 68 kg for the driver and 7 kg for luggage. Unladen weight applies to vehicles with standard equipment. Optional equipment will increase this figure.

<sup>2</sup> The actual overall trailer weight may not exceed the max. permitted trailer load plus the max. permitted tow bar download.

<sup>3</sup> BMW recommends the use of RON 95 super unleaded petrol. Unleaded fuels RON 91 and higher with a maximum ethanol content of 10 % (E10) may also be used. Output and fuel consumption figures apply to RON 98 fuel.

<sup>4</sup> The petrol engines meet the EU6 exhaust emissions standard; the diesel engine meets the EU6 exhaust emissions standard. Fuel consumption is determined in accordance with the ECE driving cycle (93/116/EU) which consists of approximately one-third urban traffic and two-thirds extra-urban driving (based on the distance covered). CO<sub>2</sub> emissions are measured in addition to fuel consumption. Optional equipment may

increase these figures. Fuel consumption and CO<sub>2</sub> emissions are affected by the selected wheel and tyre sizes. Please consult your BMW partner for more detailed information.

<sup>5</sup> Electronically limited.

<sup>6</sup> Different figures apply to the 118d xDrive. Tyre dimensions 205/55 R 16 V, wheel dimensions 7 J x 16.

<sup>7</sup> Only available with manual transmission.

<sup>8</sup> Only available with Steptronic transmission.

<sup>9</sup> Front track width of the 125i, 120d and 125d models: 1,521 mm; 118d xDrive, 120d xDrive: 1,522 mm and 116d EfficientDynamics Edition: 1,523 mm. Rear track width of the 125i, 120d, 125d, 118d xDrive and 120d xDrive: 1,556 mm.

\* Provisional figures (figures awaiting official confirming based on the ECE driving cycle).

Values in [ ] refer to vehicles with the Steptronic transmission.

## WELL TAKEN CARE OF WITH BMW SERVICES:

When you buy a BMW, you can look forward to superb service and comprehensive customer care. For example, the **Condition Based Service** independently tracks both service fluid levels and the condition of parts subject to wear and then notifies you in the display when the vehicle requires servicing. So you only need to go to your BMW service partner when it's really necessary. When you do go, our

**qualified BMW service specialists** take care of your vehicle using the newest workshop technology and only **original BMW parts**. This service is available worldwide in more than 3,300 BMW service partner establishments in over 150 countries, to provide you with limitless driving pleasure.

### BMW SERVICE.



**BMW Service Packages\*:** Individual and stress-free, just for you. Individual, well-thought-out servicing solutions carefully tailored to you and your vehicle. With one-off, predictable costs, BMW Service Packages give you complete peace of mind, so you can enjoy owning a BMW to the very fullest. Whether it's fresh from the showroom or already well-travelled – there's a BMW Service Package for every phase of your vehicle's life. All bringing you maximum quality, expertise and value retention, always at reasonable, transparent rates. And always carefully tailored to you and your BMW. Find out just how stress-free truly individual service can be!

[www.bmw.com/serviceinclusive](http://www.bmw.com/serviceinclusive)



**BMW Mobile Service\*:** This service is there for you day and night. As soon as you call, we spring into action, and take care of everything that may need doing after an accident or breakdown, with specially trained technicians working – on site or via telephone – to get your car back on the road. We offer comprehensive, country-specific mobility packages for breakdowns, and insurance that covers you in the event of an accident or theft. So if anything untoward does happen, simply call up the BMW accident hotline and we'll go to work. We'll take care of calling the emergency services, a tow truck, a replacement car, notifying your insurance company and much more. For further information please visit [www.bmw.com](http://www.bmw.com)



**BMW TeleServices\*:** With Condition Based Service, you'll be automatically reminded of your next necessary service appointment on the vehicle screen. Provided you've consented, key vehicle data will be relayed to BMW automatically for analysis. Your assigned BMW service partner will access the information and contact you free of charge to make a service appointment as and when necessary. To access BMW Teleservices, the vehicle must be equipped with the optional Intelligent Emergency Call or ConnectedDrive Services. The service can be deactivated at any time you so desire, and you can change your service partner in the iDrive menu or ConnectedDrive portal. Find out more at [www.bmw.com/teleservices](http://www.bmw.com/teleservices)

### BMW FINANCIAL SERVICE.



**BMW Financial Services\*:** Mobility solutions to meet your needs. BMW Financial Services provides you with attractive leasing, finance and insurance options. To find out more, see the price list or go to [www.bmwfs.com](http://www.bmwfs.com). Your BMW partner will also be glad to draw up an individual offer for you in person.

### THE BMW EXPERIENCE.



**BMW TV\*:** [www.bmw.tv](http://www.bmw.tv) enables you to experience the BMW brand in all its diversity. Features, portraits and background reports provide you with information on automobiles, innovations, sports and lifestyle topics.



**BMW Driving Experience:** The better you control your BMW, the more enjoyment you will derive from driving it. Use our training courses to learn for yourself what it means to reach a car's physical limits on various types of surfaces, and what you have to do to control your vehicle even in extreme situations. For further information please visit [www.bmwdrivingexperience.com](http://www.bmwdrivingexperience.com)



**BMW Welt:** Picking up a car at BMW Welt has always ranked among the best moments for any driver. Turn this moment into one whole unforgettable day: experience the handover of your new BMW as just one part of a programme of activities perfectly tailored to your interests. At BMW Welt, you are surrounded by the BMW Museum, the main BMW factory, and the BMW Group headquarters, representing an exciting history, a breathtaking present – and spectacular visions for the future. Find out more at [www.bmw-welt.com/en](http://www.bmw-welt.com/en)



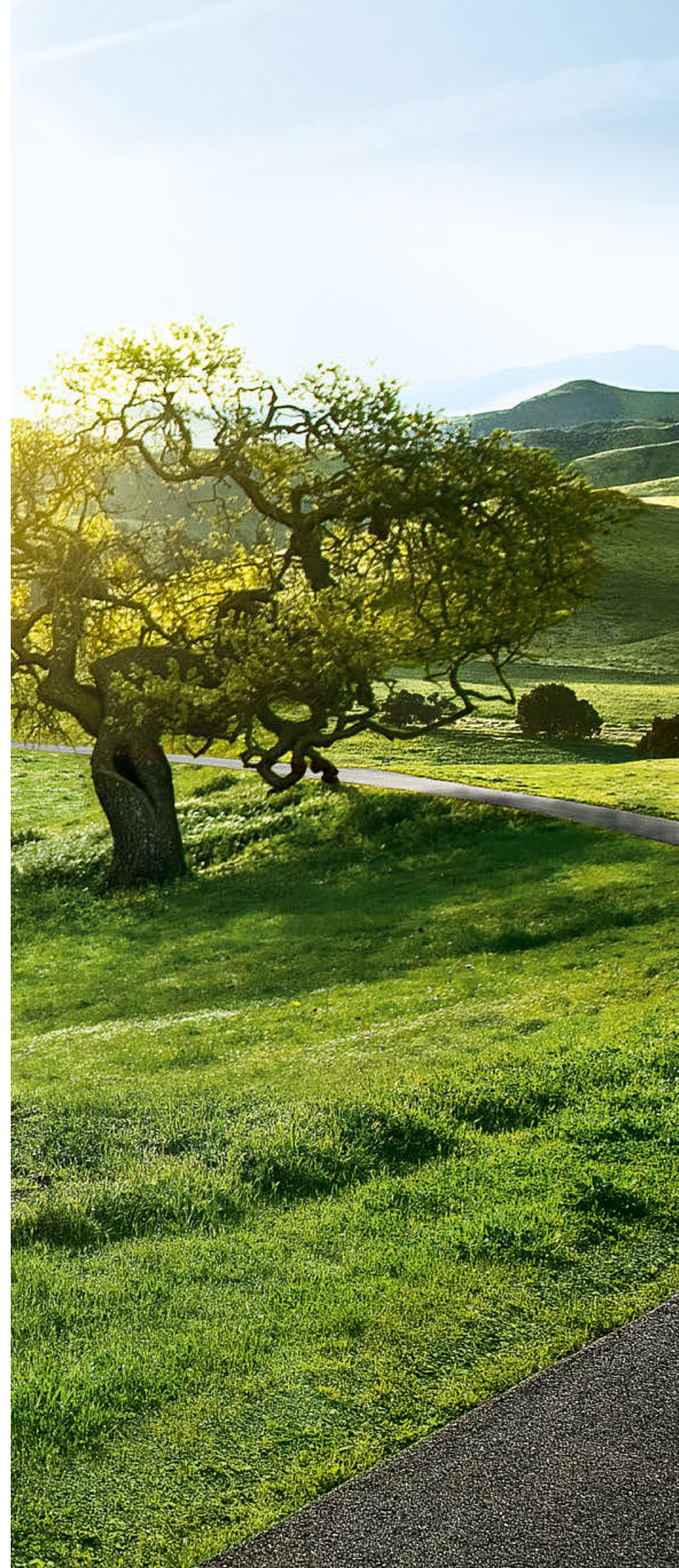
**BMW Magazine:** In BMW Magazine, experience the newest BMW models in front of stunning backdrops. Discover new design trends, travel destinations and the richness of modern life. Encounter people with visionary ideas who are changing the world. Find out more at [www.bmw.com/magazine](http://www.bmw.com/magazine)

\* May not be available in all countries. Please consult your BMW partner.

## SHAPING THE FUTURE – RESPONSIBLY.

In 2015, the BMW Group was once more listed in the World and European Dow Jones Sustainability Index as one of the most sustainable automotive companies worldwide. The development of efficient vehicle concepts and environmentally friendly production processes, including recycling, is an integral part of our philosophy. BMW EfficientDynamics and electric vehicles have enabled us to cut the CO<sub>2</sub> emissions from our European new-vehicle fleet by more than 35% since 1995. We have also reduced the amount of resources used in production, such as water and energy, by 34% between 2006 and 2014, with a reduction to 45% of previous levels aimed at for 2020. In terms of other resources (such as volatile organic compounds, process wastewater and waste) our 45% target was met in 2014, and we will continue to work on further improvement. Production at our engine plant in Steyr has been waste-water free since 2007. And of course, at the end of its service life, every one of our vehicles can be easily and economically recycled. To return your end-of-life vehicle, please contact your BMW partner. For more information on this issue please visit our website.

[www.bmw.com/EfficientDynamics](http://www.bmw.com/EfficientDynamics)  
[www.bmwgroup.com/responsibility](http://www.bmwgroup.com/responsibility)  
[www.bmw.com/recycling](http://www.bmw.com/recycling)



More about BMW



Sheer  
Driving Pleasure

[www.bmw.com](http://www.bmw.com)

The models illustrated in this brochure show the specifications of vehicles produced by BMW AG for the German market. In part, they include optional equipment and accessories not fitted as standard. According to the specific requirements of the markets of other European Union member states, alterations in models, standard and optional equipment, as described in this brochure, may occur. For more information about country-specific vehicle versions, please contact your local BMW partner. Subject to change in design and equipment.

© BMW AG, Munich/Germany. Not to be reproduced wholly or in part without written permission of BMW AG, Munich.

4 11 001 028 20 1 2016 BB. Printed in Germany 2016.

